



Auctioneer/Realtor®
PETER R. KIKO SR.
330-705-5996
peter@kikocompany.com



Auctioneer/Realtor®
LENNIE E. MILANO
330-495-3900
lenniemilano@kikocompany.com



Auctioneer/Realtor®
LORI KIKO
330-495-3617
lori@kikocompany.com



Auctioneer/Realtor®
DOUG L. MILANO
330-205-2196
dmilano@kikocompany.com



330.455.9357 • kikoauctions.com



Explore Your Options

AUCTION

LEADING THE INDUSTRY SINCE 1945

FRIDAY – MARCH 22, 2019 – 10:00 AM
REAL ESTATE SELLS AT 11:00 AM

293 Acres Bottom Farm Ground

Scott Gregoire Retirement Auction - Attn: Farmers, Vegetable Growers & Investors
To Be Sold In 4 Parcels - Majority Of Soil Is Well-Drained Black Carlisle Muck
3 Irrigation Wells – 90% Systematically Tiled
Heated Shop Bldg. – Machinery Storage Bldgs. - Office/2-Bedroom Home
Aggregate Parking Lot - Baughman Twp. – Wayne Co.
Also Selling: Full Line Of Sod Farming Equip.
Tractors – Trucks – Excavating Equip – Shop Equip

After 50 years in the Green Industry, Scott Gregoire is retiring and Medina Turf will continue the business.

Absolute auction, all sells to the highest bidders on location:

14349 BURTON CITY RD., ORRVILLE, OH 44667

Directions: From US RT 30 in Dalton, OH take SR 94 north 3.7 miles to Burton City Rd. then west to auction OR from RT 57 in Orrville, OH take Orr St. east 1 mile to auction. Watch for KIKO signs.



Information is believed to be accurate but not guaranteed.



330.455.9357 • kikoauctions.com



This rare opportunity presents 293.3 acres of productive black bottom ground. To be sold bidder's choice as follows:

PARCEL #1: 196 acres, corner parcel. Improvements include: 45x70 heated shop bldg. w/ lean-to addition, restrooms & 4 overhead doors, 48x80 pole bldg. w/ 32x80 lean-to addition. 60x140 drive-thru hoop barn w/ 18x18 overhead doors. Also, 2-bedroom ranch style home as main office bldg. w/ elec. heat, city water, & septic system. Large aggregate parking lot & 2 loading docks for semi-trailers. (2) 10" water wells for irrigation plus holding pond, & underground lines to hydrants. Turbine pump to sell separate. Over 1 mile road frontage. Opportunity for the right person. Soil types include Ch & Ly.

PARCEL #2: 60.3 acres w/ over 2,000' road frontage. Soil types include Ld, Ly, Sb, FcB.

PARCEL #3: (Located just east of auction location). 36.9 acres. 679' road frontage. Irrigation well and small brick pump building. Small portion of land located on southside of road. Soil types are Ly & Ld.

PARCEL #4: Non-buildable half-acre deeded lot.

NOTE: Parcels will be sold per acre bidder's choice and not offered as a unit at the end. All parcels subject to a new deed restriction, NO commercial sod production for 10 years. Parcels #1 is currently under the land preservation agriculture use easement. Bank financing available to qualified bidders.

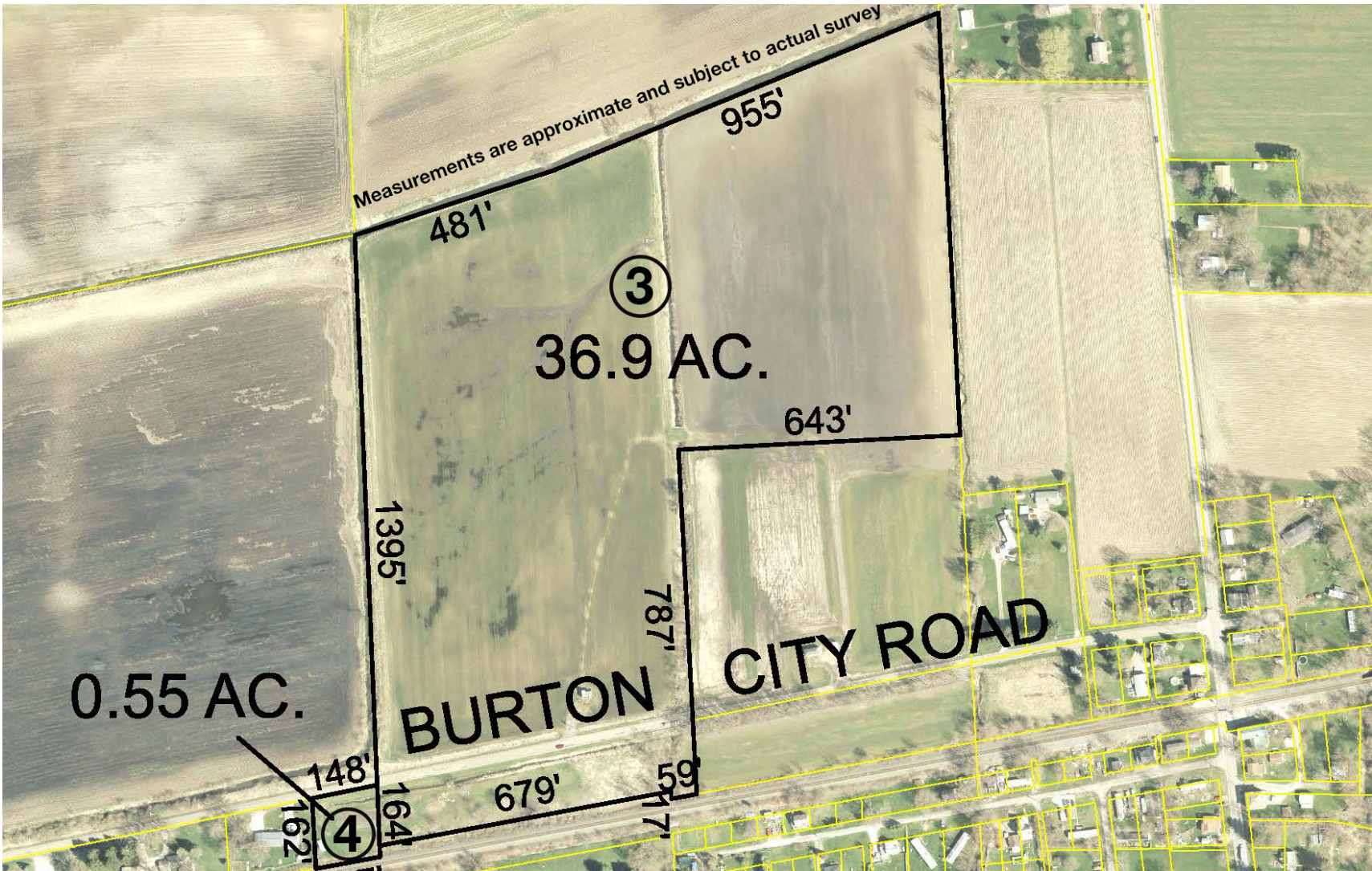
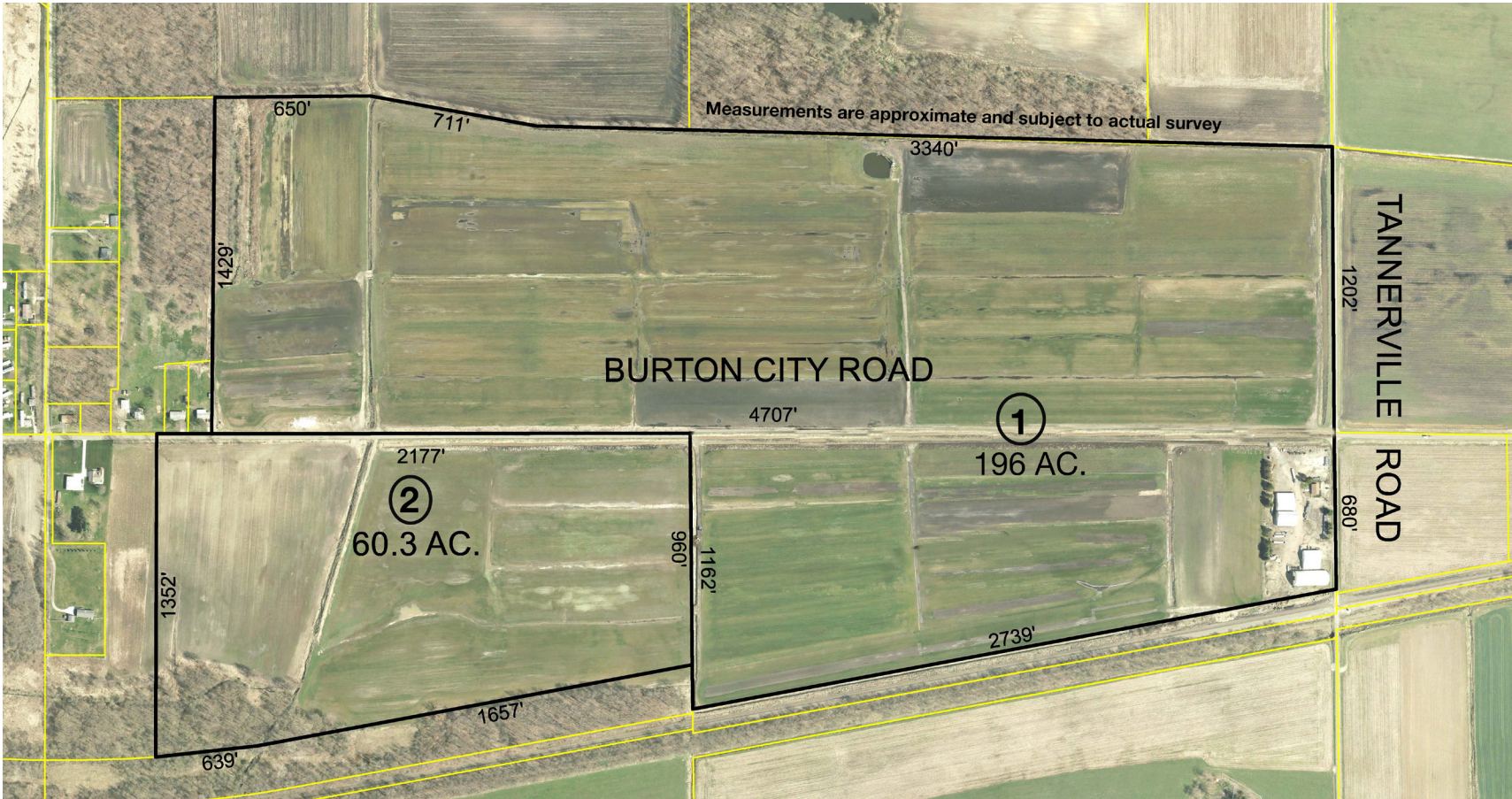
TERMS ON REAL ESTATE: 10% down auction day, balance due at closing. A 10% buyer's premium will be added to the highest bid to establish the purchase price, which goes to the seller. Any desired inspections must be made prior to bidding. All information contained herein was derived from sources believed to be correct. Information is believed to be accurate but not guaranteed.

EQUIPMENT: CASE 590 Super L, 4x4, extend-a-hoe, shuttle, cab w/ heat, ext. hyd., 5,800 hrs., ser. #JJ6020947 – CAT D5C Series III dozer, ROPS, 6-way blade, 20" wide tracks, 6,500 hrs. – Drott track loader, mod. 175K3, diesel – CASE W20B payload, hyd. clam bucket, ser. #9134831 – Royer 366 portable shredder/mixer, Ford diesel, air jacks, pintle hitch, 2,057 hrs. – Royer 555 shredder/mixer, Perkins diesel, new shredder belt.

TRACTORS: White 2-155, diesel, MFWD, cab w/ heat & AC, remote hyd., 540-100 PTO, axle duals, front weights, fresh engine overhaul, shows 7,000 hrs. – '06 Kubota M105S, cab, MFWD, left-hand reverser, remote hyd., 57x31x26 turf tires, 11,000 hrs. – Ford 6640, diesel, cab, 12 sp., shuttle, hyd. remotes, 66x43x25 turf tires (ag tires sell separate), fresh factory reman. motor, 3,897 hrs. – Ford 5610, reman. motor, diesel, cab, 540 PTO, 3pt, 57x31x26 turf tires (ag tires to sell separate).

SOD EQUIPMENT: NH 1570, MFWD, diesel, auto steer w/ Brower 24" sod cutter, hyd. depth control & Trebro Stackit auto pallet stacker w/ Kubota diesel, 2,600 hrs. – Ford 3000, reman. Eng., Brower 24" sod cutter, elec. depth control, manual stack – MF 20, diesel, Brower 24" sod cutter, elec. depth control, manual stack – Thunderbird wheel-roll traveler w/ approx. 1,000' of 5" pipe – Eversman mod. 329 9' pull-type land leveler.

FORKLIFTS: CASE 586D, cab, 6,000-lb. cap., side shift, diesel, duals, ser. #9075572 – CASE 586C, 6,000-lb. cap.,



ROPS, new tires, diesel, 6,855 hrs., overhauled 5 yrs. ago – CASE 586C, side shift, diesel, ROPS, new tires, fresh overhauled engine, shows 8,474 hrs. – Toyota #7F6V15, 3,000-lb. cap. LP – (2) Spider Piggybacks, 1 w/ Kubota diesel & 1 w/ Honda gas and extenda. forks.

TRUCKS: 1996 Mack CL713 semi, day cab, live tandem, Eaton trans., E700 400HP air ride – 1994 IH, 4700 T44E diesel, BBI mod. 8P4534, 11' lime/fert. spreader, cross conveyor, twin hyd. spinners, 48x31x20 flotation rear tires, 72,725 mi. – 1985 IH S1900, 12' dump bed, air tailgate, Allison auto, single axle, air brakes, reman. engine shows 280,565 mi. – 2006 Dodge RAM 2500, 2WD, Cummins, 6-sp. Manual, newer contractor's box – 1995 Dodge 3500 1-ton dually, 2WD, Cummins diesel, 9' hyd. dump bed w/ 4' steel sides & tailgate.

TRAILERS: 2012 Kaufman 25-ton 40' drop-deck semi eq. trailer w/ lay flat ramps – '92 Dorsey flatbed semi-trailer, 48' new fixed tandem spring ride, sliding strap ratchets – Hudson 20' tandem-axle eq. trailer, pintle hitch.

OTHER EQUIPMENT: (3) RM22 Brower 22' hyd. batwing finish mowers - (2) Progressive 22' mod. TD92 batwing finish mowers, ser. #159220, only used 3 seasons – Like-new CASE IH 3950, 18' hyd. fold disc w/ cushion gangs – White 252 14' dual trans port disc – Athens HD 12' offset disc – Kewanee 18' fold disc – IH 475 14' hyd. fold disc – 3pt Howard 8' 9", 1,000 PTO rototiller (for 100 HP tractor) – Brillion 20' hyd. fold spike drag – Lenco 15' Dunham cultipacker – Brillion 14' cultipacker – Nice Krause 5-shank disc chisel – Brillion 3pt 10' grass seeder w/ dbl. packer wheels – MF 3pt 7' sickle bar mower – Beach Tech STR sand reclaimer – 3pt hyd. fold field cultivator – CAGLE PTO sprayer, 40' boom – Century tandem-axle PTO sprayer, 45' boom – JD 550 PTO sprayer, hyd. fold, 50' booms – 9-shank chisel plow – IH 720, 16" 7-bottom on-land plow – IH 540 4-bottom plow – Oliver 548 5x16 semi mount plow – 3', 6', 8, & 12' steel land rollers – True Flow PTO, 3,200 GPM pump – Century 20 HP elec. irrigation pump, 120 psi, 200-gal. per minute, 220V single phase, repacked 5 yrs. ago – Demings mod. 4700 3-stage, elec. pump. 900-gal. per minute, 90 psi – 3pt hyd. forks - Kifco-Caprari PTO pump.

SHOP EQUIP: 3,000-gal. double-wall fuel tank w/ elec. pump – 1,000-gal. fuel tank w/ elec. pump - Chop saw – Grinders - Torch set - Miller thunderbolt stick welder – Hobart stick welder - 50-gal., 12V fuel tank - Maple, white, & red oak rough sawn lumber - 20' barn timbers - 100+ treated 6"x6"x7' guardrail posts - Pneumatic greasers - Pneumatic bumper jack - Hyd. press - 18" I-beams up to 20' lengths - Vertical air compressor - Jack stands - Parts washer – A-frame w/ 1/2-ton chain hoist - Bolt bins - Tire changer - Sandblast cabinet – Lockers - Air tag axle - Black drain pipe - Some office equipment – Clean Burn mod. 1750 waste oil furnace – 1956 Dodge pickup cab indoors – 22 large hand-cut sandstones - Etc.

TERMS ON CHATELS: Driver's license or State ID required to register for bidder number. Cash, Check, Debit Card, Visa, or MasterCard accepted. 4% buyer's premium on all sales, 4% waived for cash or check. Information is believed to be accurate but not guaranteed.

AUCTION SALE ORDER: 10:00 AM shop equip., 11:00 AM real estate, 12:00 PM trucks, tractors, & equip. Two rings at 12:00 PM. For equip questions call Medina Sod Shop at 330-350-2555.

AUCTION BY ORDER OF: Scott Gregoire & Medina Sod Farms, MSF Holdings LLC, & Gregoire Inc.